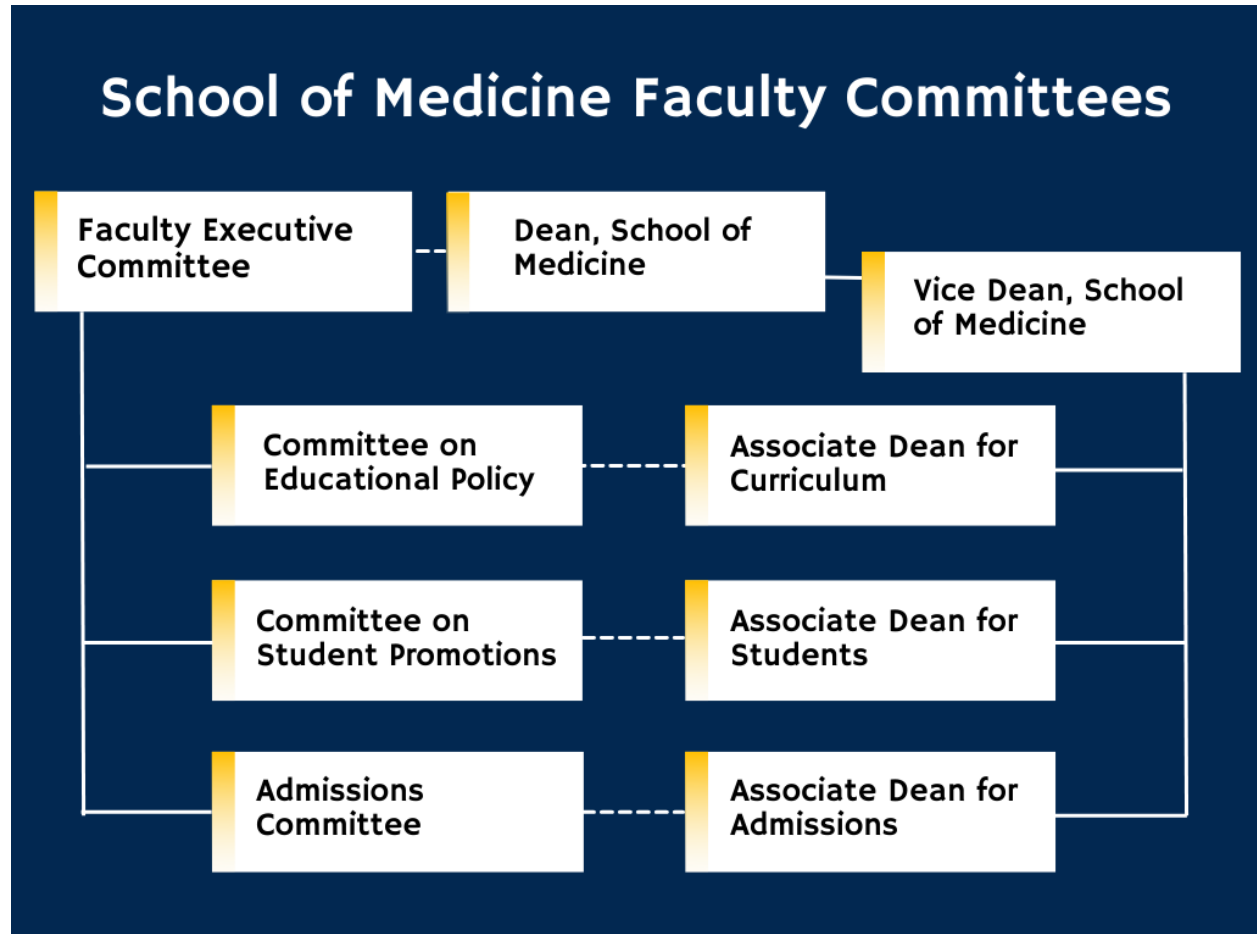


The School of Medicine has seven standing committees that report to the Faculty Executive Committee. Three of those committees, the Admissions Committee, the Committee on Educational Policy, and the Committee on Student Promotions, include Associate Deans from the Office of Medical Education as ex-officio members. The organizational chart for those committees looks like this.



The Committee on Educational Policy (CEP) has three subcommittees, the Curriculum Enrichment Subcommittee (CES), the Curriculum Evaluations and Outcomes Subcommittee (CEOS), and the Curriculum Steering Subcommittee (CSS). CES' focus is on elective experiences, CEOS utilizes data from course assessment outcomes and evaluations to provide direction and support on assessments, data collection, and evaluations, and CSS is responsible for the oversight of the required curriculum, which includes input from the Pre-Clerkship Workgroup, the Clerkship Directors Workgroup, and the Clinical Skills Workgroup. The School of Medicine's Bylaws and Regulations detail the membership, duties, and responsibilities of each committee.

# Curriculum Committees

